

Name: \_\_\_\_\_ Period: \_\_\_\_\_ Date: \_\_\_\_\_

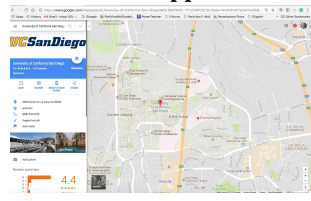
# Lesson 15: Home Learning A

You will use Google maps to continue to investigate the two different environments that you were introduced to in the juncos case you are studying in class. This page show you how to use the map view, satellite view, and street view options for exploring UCSD. Record your observations for this environment on this page. The back page provides the same for Mt. Laguna.

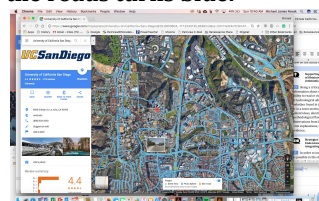
## UCSD Environment

**Directions**

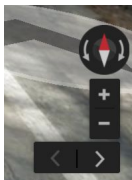
**1. Use google to search for "UCSD" and click on the map in the search results. You will see this interface appear.**



**2. Click on satellite view and click and drag the orange person icon over it, you will see the roads turns blue.**



**3. Release the person icon on these spots to virtually walk around using the navigation controls in the bottom right corner. Repeat steps 2 and 3 if you wish for different spots on campus.**



**Noticings:**

---

**Wonderings:**

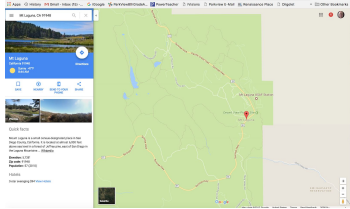
---



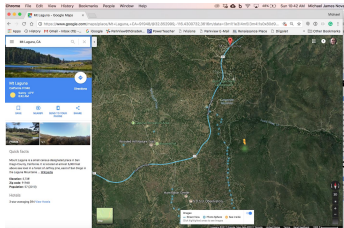
### Mt. Laguna Environment

#### Directions

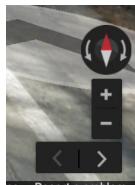
1. Use google to search for "Mt. Laguna" and click on the map in the search results. You will see this interface appear.



2. Click on satellite view and click and drag the orange person icon over it, you will see the roads turns blue.



3. Release the person icon on these spots to virtually walk around using the navigation controls in the bottom right corner. Repeat steps 2 and 3 if you wish for different spots on campus.



#### Noticings:

#### Wonderings:



**Q1. What, if anything about these two environments, might be related to the differences in boldness, wing length, feather coloring, and the breeding season you saw in the two junco populations?**

---

---

---

---

**Q2. Birds may not be the only organism that you have interacted with, where you've seen that not all the individuals look alike and where not all individuals behave the same way.**

What are some other organisms that you've encountered, that interact with people in both urban and rural environments, that you've seen these three types of variations between individuals?

- Coloration varies between individuals.
- Limb length (rather than wingspan) varies between individuals.
- Boldness (or another behavior) varies between individuals.

**Q3. Is your explanation for why these differences exist in the organisms you listed the same as your initial models and explanations you developed for the juncos? Explain.**

---

---

---

---

---

---

---

